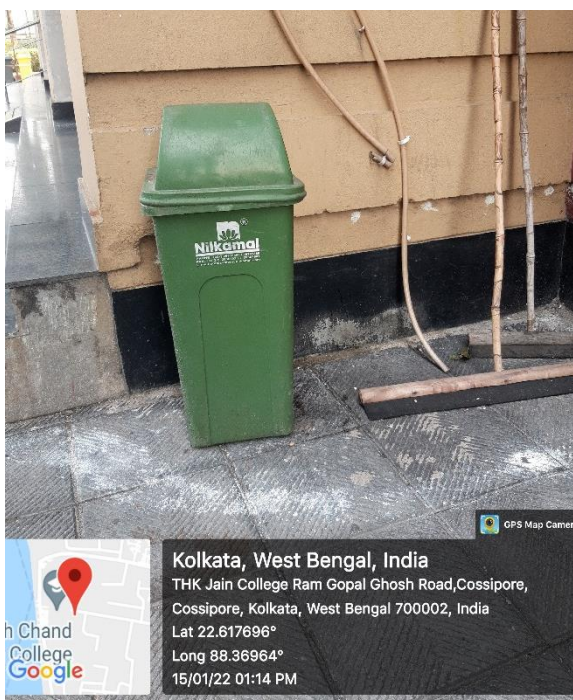


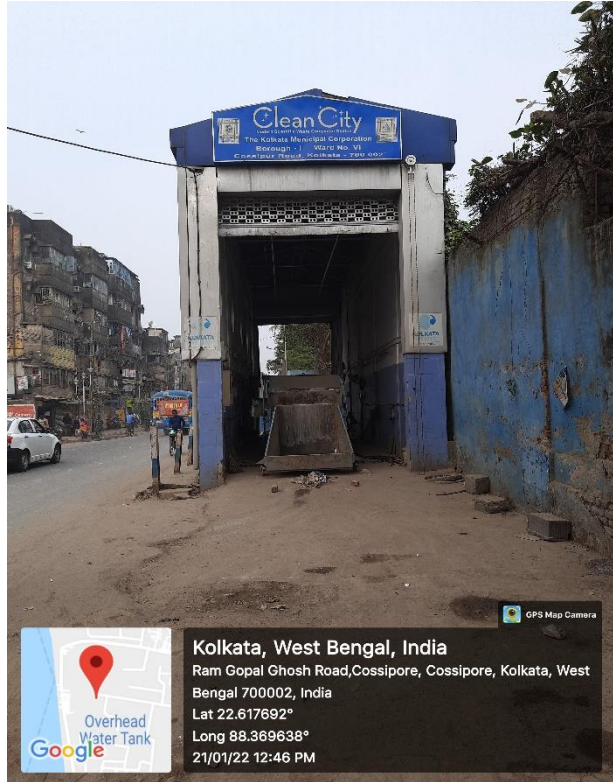
7.1.3. Describe the facilities in the Institution for the management of the following types of degradable and non-degradable waste:

The college authority has taken all measures to maintain a clean environment and proper disposal all kind of wastes in suitable manner as follows:

➤ **Solid Waste Management:**

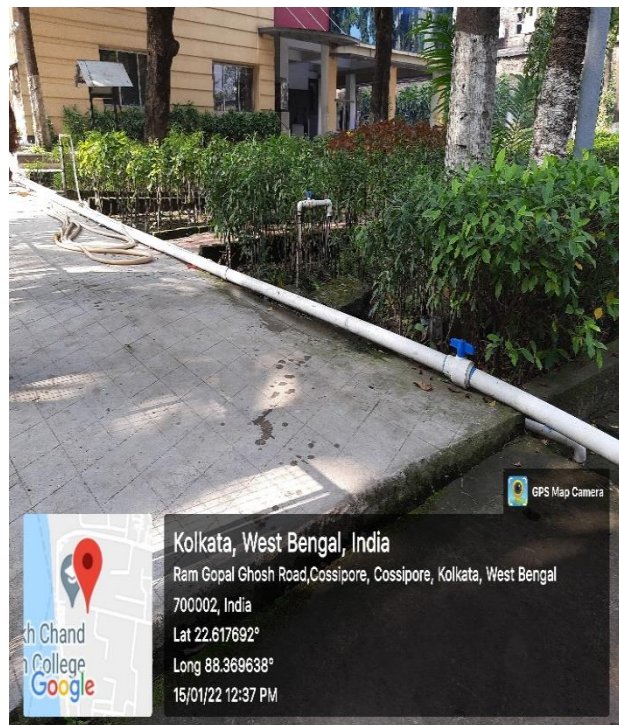
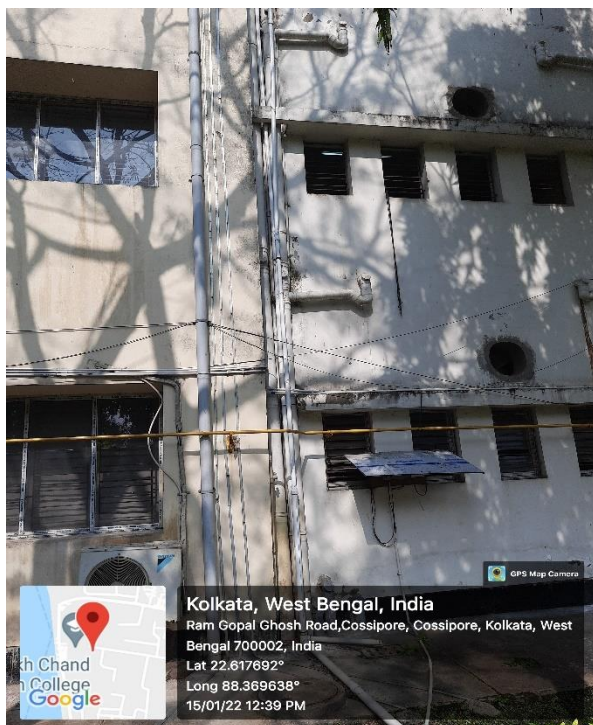
- Separate Garbage bins in different location of the campus including open areas, rooms and toilets. At the end, sweeper carries the collective garbage to dump in the municipal compactor kept on the roadside.

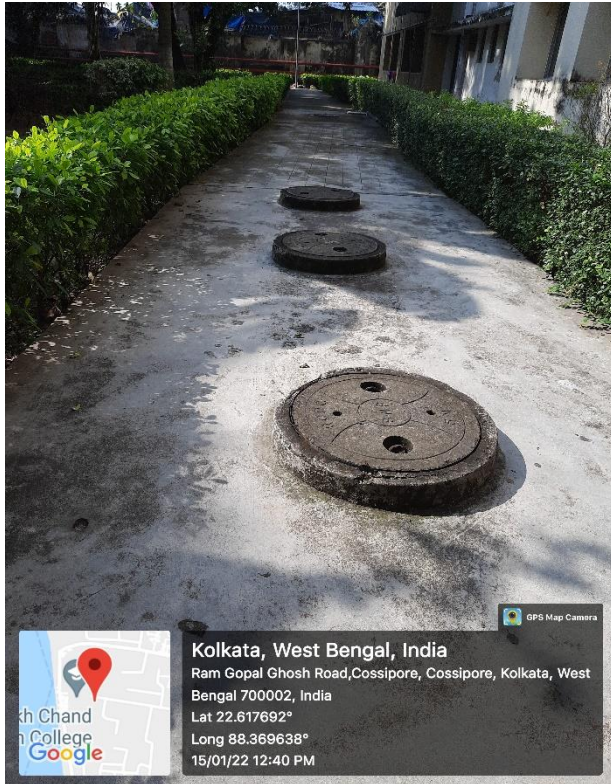




➤ Liquid waste Management:

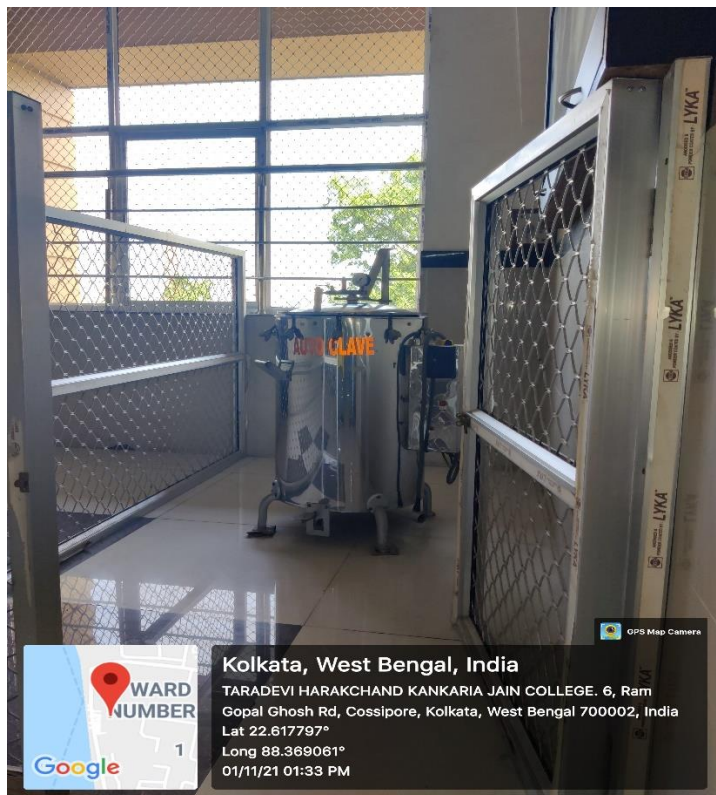
- Water pipelines coming out from canteen, laboratories separately join through surface /underground pipelines and water gets disposed to municipal pipelines. The water from toilets separately joins the municipal sewage lines.





➤ **Biomedical waste Management:**

All live microorganisms are killed by autoclaving the media and other glass wares



➤ Chemical waste

Acid waste and Organic solvent wastes are being collected in separate container. They are neutralized, diluted and then discarded down the drain

